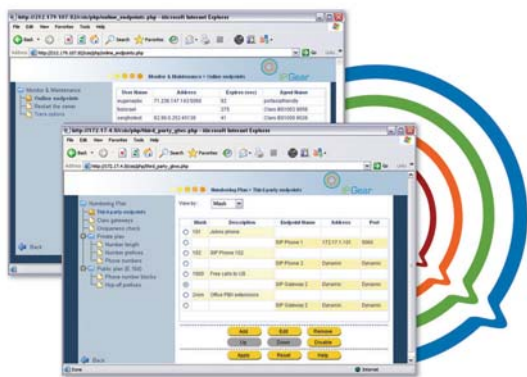


Claro SiS (SIP Integration Server)

An elegant and simple software solution for
NAT-associated problems in Enterprise VoIP Networks



Features

- Easy NAT traversal
- Simple integration with 3rd party SIP phones and gateways
- Partial functionality of the Session Border Controller (not provided B2B server and codecs translation)
- Claro smart Numbering Plan support
 - Dialing to private and public numbers
 - LCR
 - Dialing to third-party endpoints
 - Automatic building of common dialing tables
- Browser-based user-friendly configurator

The new IP Gear Claro SiS solves the problems caused by NAT (Network Address Translation). Claro SiS is a complete, pre-installed system which includes both an integrated SIP proxy server and an integrated RTP proxy server. Therefore, it can efficiently employ both pinholing and voice hair-pinning.

Claro SiS preserves the unique features of the Claro gateways numbering plan and maintains the ability to build dialing tables. In other words, the Claro SiS supports the Private-Officer architecture. Claro SiS minimizes the expenses and inconvenience associated with configuration and management. Both can be done remotely using the browser-based configuration pages.

SIP Phones Support

Claro SiS can manage calls to or from SIP phones. The SIP phones must be registered on the Claro SiS like on any other SIP proxy. The IP phones' User Names (phone numbers) are saved in the SIP proxy "Location" database. When Claro SiS receives a SIP INVITE request, it first tries to find a suitable call destination by checking Claro dialing tables. If a suitable destination is not found, then the Claro SiS tries to locate the destination by searching the "Location" database. The call will then be routed to the SIP phone.

Third-party Gateways Support

Claro SiS expands support for third-party gateways. In the Claro Private-Officer architecture it was necessary to define the IP address. With Claro SiS, a third-party gateway may be defined by a DNS host name. Also, there is support for third-party gateways with dynamic addresses.

LCR Support

The Claro SiS supports multiple call destinations for hop-off calls and for calls to third-party gateways. It can perform so-called sequential call forking for INVITE requests. That means that, if the Claro SiS has found several possible call destinations for a received INVITE request, it will try to connect to each destination, one-by-one, until an affirmative response is received.

Better VoIP. Better Business.



IP Gear
A division of Qualmax Inc.

Claro SiS

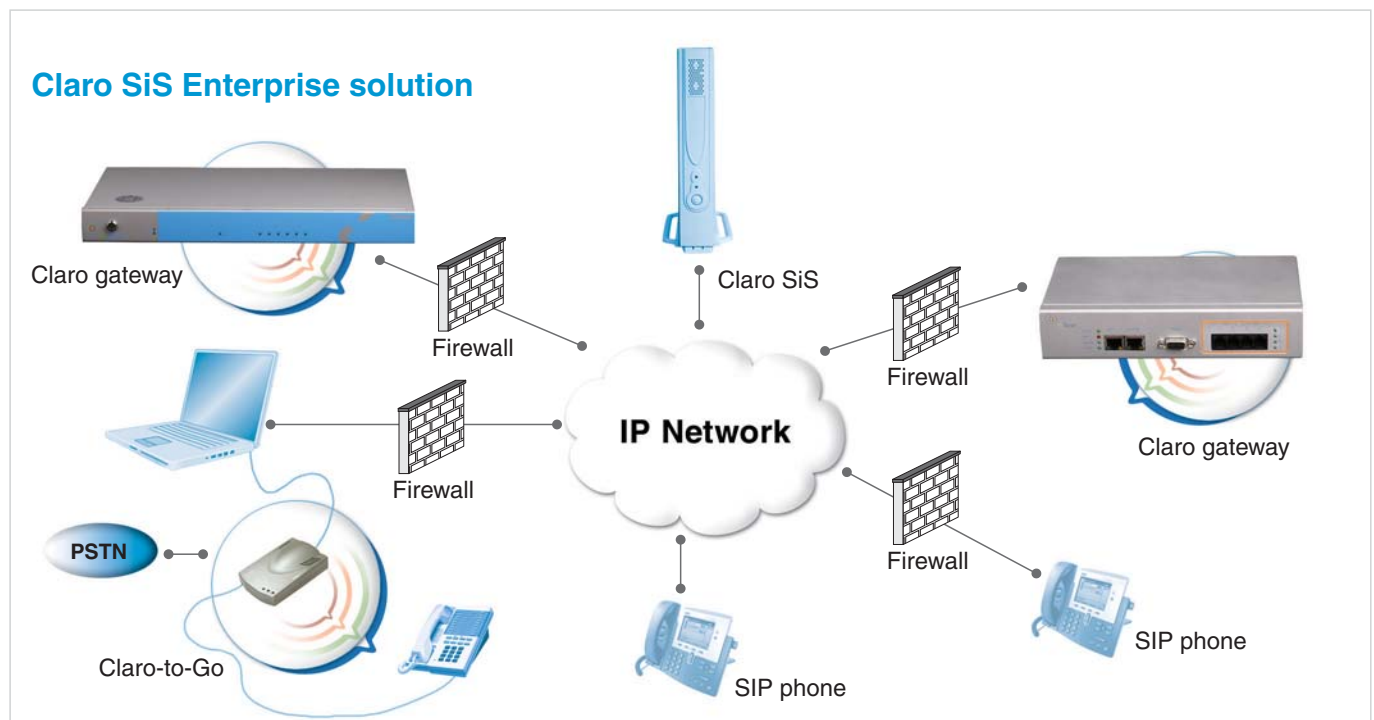
Typical Enterprise VoIP Network

- All gateways are members of the numbering plan that is managed by the the Claro SiS
- SIP signaling for all VoIP calls goes through the the Claro SiS's SIP Proxy
- Claro SiS decides the RTP path between two SIP end-points. It may route the voice packets either through the built-in RTP proxy or directly.

Claro SiS for Service Providers

The Claro SiS may be also used in small service provider networks. Note that it cannot function as a replacement for a soft switch or a SIP B2B server. The Claro SiS does not have a billing feature and cannot produce Call Detail Reporting (CDR). Nevertheless, in some environments it can be used as an additional SIP server for solving NAT traversal problems.

Claro SiS Enterprise solution



Ordering Information

Claro SiS "Thin"	CS-11-03	Thin Client with capacity of 300 calls
------------------	----------	----------------------------------------

About IP Gear

IP Gear Ltd., is a leading developer of *intelligently routing VoIP, GSM and cellular gateways.*



IP Gear
A division of Qualmax Inc.

IP Gear Ltd. Headquarters

Rabin Bldg., Teradyon Industrial Park
Misgav 20179, Israel
Tel. +972 4 9907555
Fax. +972 4 9990334
www.ipgear.net

U.S. Headquarters

340 West Fifth Av., Eugene, OR 97401
Tel. +1-866-QUALMAX,
+1-541-683-2892
Fax. +1-541-683-4009
www.ipgear.net